

REC TWINPEAK 25 MONO 72 SERIES

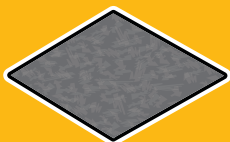
PREMIUM SOLAR PANELS 100% MADE IN SINGAPORE

REC TwinPeak 25 Mono 72 Series solar panels feature an innovative design with high efficiency and an industry-leading lightweight, yet robust construction, enabling customers to get the most out of the installation area.

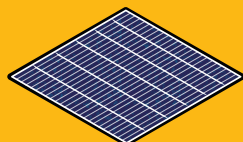
Combined with the product quality and reliability of a strong and established European brand, REC TwinPeak 25 Mono 72 Series panels are ideal for all types of commercial rooftop and utility installations worldwide.



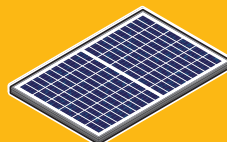
INTEGRATED MANUFACTURING IN SINGAPORE



WAFERS



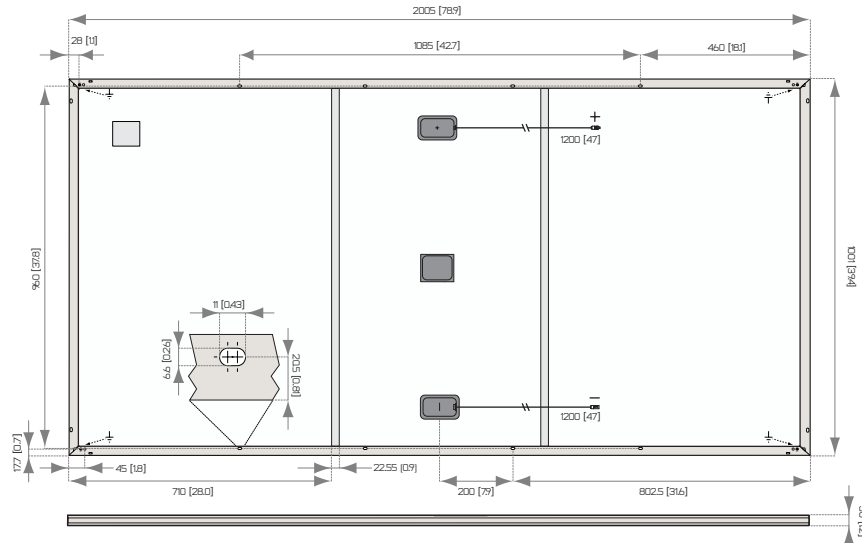
CELLS



MODULES



REC TWINPEAK 25 MONO 72 SERIES



All measurements in mm [in]

ELECTRICAL DATA @ STC	Product Code*: RECxxxTP2SM 72				
Nominal Power - P_{MPP} (Wp)	360	365	370	375	380
Watt Class Sorting - (W)	-0/+5	-0/+5	-0/+5	-0/+5	-0/+5
Nominal Power Voltage - V_{MPP} (V)	39.4	39.6	39.8	40.1	40.3
Nominal Power Current - I_{MPP} (A)	9.14	9.22	9.30	9.36	9.43
Open Circuit Voltage - V_{OC} (V)	47.4	47.6	47.8	48.0	48.2
Short Circuit Current - I_{SC} (A)	9.74	9.82	9.85	9.96	10.05
Panel Efficiency (%)	17.9	18.2	18.4	18.7	18.9

Values at standard test conditions STC (airmass AM 1.5, irradiance 1000 W/m², cell temperature 77°F (25°C)).
At low irradiance of 200 W/m² (AM 1.5 and cell temperature 77°F (25°C)) at least 95% of the STC module efficiency will be achieved.
*xxx indicates the nominal power class (P_{MPP}) at STC, and can be followed by the suffix XV for modules with a 1500 V maximum system rating.

ELECTRICAL DATA @ NOCT	Product Code*: RECxxxTP2SM 72				
Nominal Power - P_{MPP} (Wp)	271	274	278	282	286
Nominal Power Voltage - V_{MPP} (V)	36.6	36.8	37.0	37.3	37.5
Nominal Power Current - I_{MPP} (A)	7.39	7.45	7.51	7.56	7.62
Open Circuit Voltage - V_{OC} (V)	44.1	44.3	44.4	44.6	44.8
Short Circuit Current - I_{SC} (A)	7.87	7.93	7.96	8.05	8.12

Nominal cell operating temperature NOCT (800 W/m², AM 1.5, windspeed 1 m/s, ambient temperature 68°F (20°C)).
*xxx indicates the nominal power class (P_{MPP}) at STC, and can be followed by the suffix XV for modules with a 1500 V maximum system rating.

CERTIFICATION



UL 1703, Fire classification: Type 1 (1500 V XV); Type 2 (1000 V);
IEC 61215, IEC 61730, IEC 62804 (PID), IEC 62716 (Ammonia),
IEC 61701 (Salt Mist level 6),
ISO 9001: 2015, ISO 14001: 2004, OHSAS 18001: 2007

WARRANTY

20 year product warranty
25 year linear power output warranty
Max. performance degradation of 0.5% p.a. from 97.5% in year 1
See warranty conditions for further details.

18.9% EFFICIENCY
20 YEAR PRODUCT WARRANTY
25 YEAR LINEAR POWER OUTPUT WARRANTY

TEMPERATURE RATINGS

Nominal Operating Cell Temperature (NOCT)	44.9°C (±2°C)
Temperature Coefficient of P_{MPP}	-0.37 %/°C
Temperature Coefficient of V_{OC}	-0.28 %/°C
Temperature Coefficient of I_{SC}	0.04 %/°C

GENERAL DATA

Cell type:	144 half-cut monocrystalline PERC cells 6 strings of 24 cells in series
Glass:	0.13" (3.2 mm) solar glass with anti-reflection surface treatment
Back Sheet:	Highly resistant polyester
Frame:	Anodized aluminum (silver)
Support bars:	Anodized aluminum (bonded to backsheet)
Junction Box:	IP67 rated with 3 bypass diodes 12 AWG (4 mm ²) PV wire, 47" + 47" (1.2 m + 1.2 m)
Connectors:	Tonglin TL-Cable01S-F (4 mm ²)
Origins:	Made in Singapore

MAXIMUM RATINGS

Operational Temperature:	-40 ... +185°F (-40 ... +85°C)
Maximum System Voltage:	1000 V / 1500 V* *Dependent on product type
Design Load:	(+) 75.2 lbs/ft ² (3600 Pa)
Design Load:	(-) 33.4 lbs/ft ² (1600 Pa)
	Refer to installation instructions

Max Series Fuse Rating:	20 A
Max Reverse Current:	20 A

MECHANICAL DATA

Dimensions:	78.9" x 39.4" x 1.2" (2005 x 1001 x 30 mm)
Area:	21.6 ft ² (2.01 m ²)
Weight:	48.5 lbs (22 kg)

Note! Specifications subject to change without notice.



www.recgroup.com